



This guide is intended for researchers, staff and students from participating institutions to securely access the Internet from Curtin.

The steps involved in setting up eduroam connection in Curtin are:

1. Setup eduroam wireless network
2. Connect to eduroam

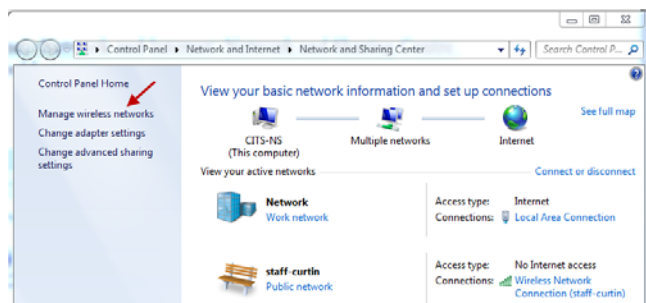
## **Follow the instructions as shown below:**

Note: You may be able to use this setup guide for Windows Vista, though some screens may be different.

### Step 1.

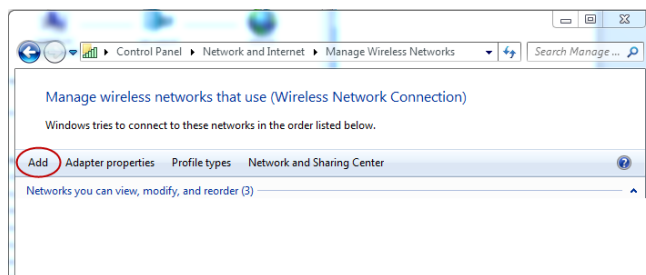
Click on Start > Control Panel > Network and Internet > Network and Sharing Center. The following window should appear.

### Step 2.



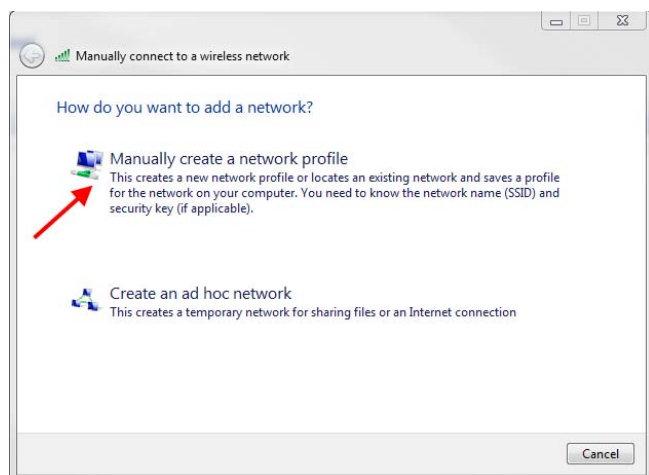
Click on **Manage wireless networks** link.

### Step 3.



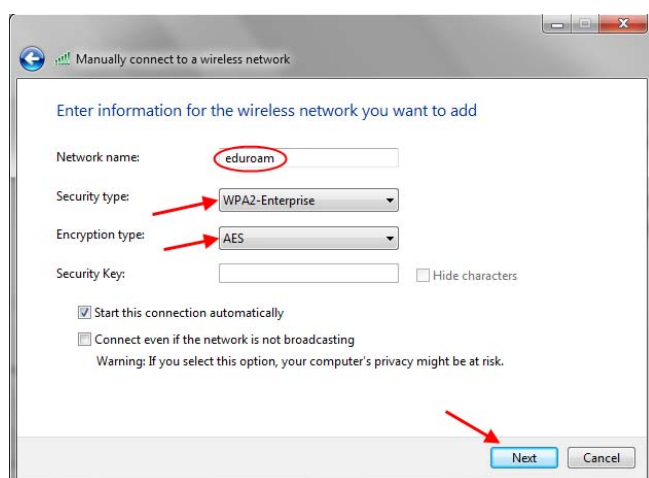
Click on the **Add** link and the window below will appear.

## Step 4.



Select the option **Manually create a network profile**

## Step 5.



Enter **eduroam** in the box labelled **Network name**:

Click on the selection box labelled **Security type** and select **WPA2-Enterprise**.

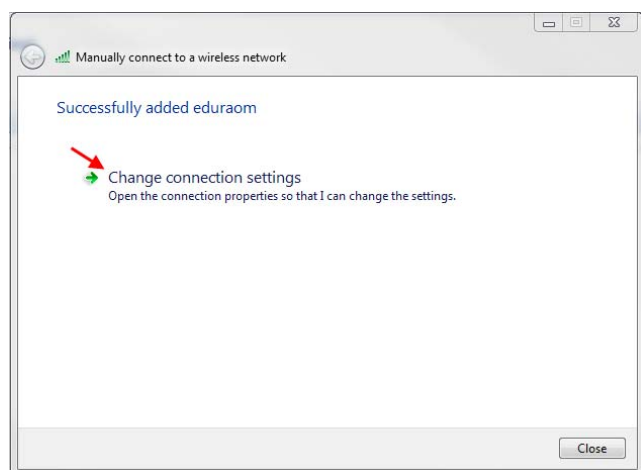
The Encryption type will automatically select **AES**.

Do not enter anything in the box titled **Security Key/Pass phrase** as this is not required.

Select the option **Start this connection automatically**.

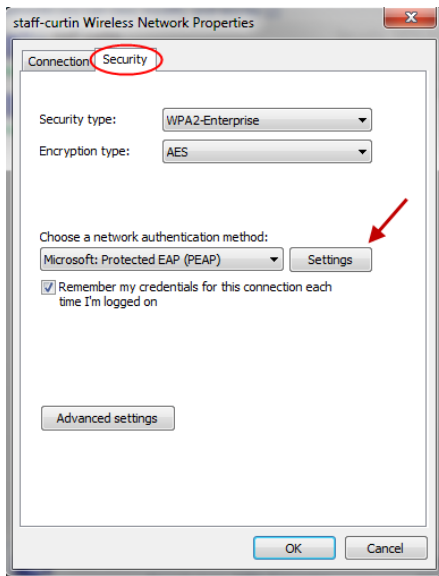
Now click **Next**.

## Step 6.



Select **Change connection settings**.

## Step 7.



Click on the **Security** tab

Make sure **WPA2-Enterprise** is selected for **Security type**

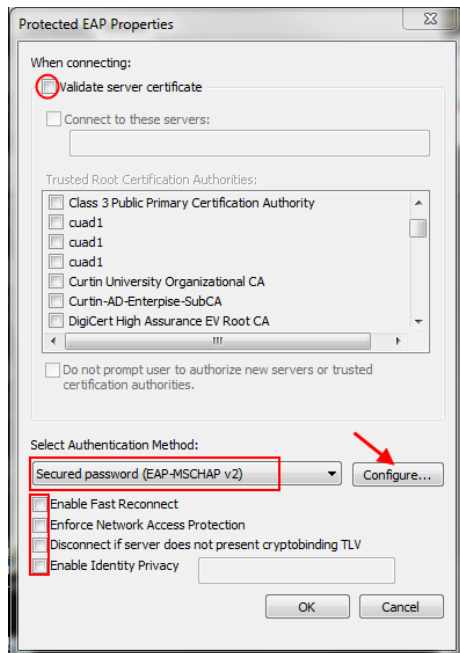
Make sure **AES** is selected for **Encryption type**

Make sure **Microsoft: Protected EAP (PEAP)** is selected as a network authentication method.

Tick the “Remember my credentials for this connection each time I’m logged on”

Click on the **Settings** button

## Step 8.



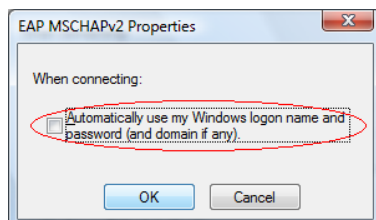
Un-Select **Validate server certificate**.

Click on the selection box under **Select Authentication Method:** and select **Secured password (EAP-MSCHAP v2)**.

Un-select **Enable Fast Reconnect** if it’s ticked, as well as the next three

Click on the **Configure...** button

## Step 9.

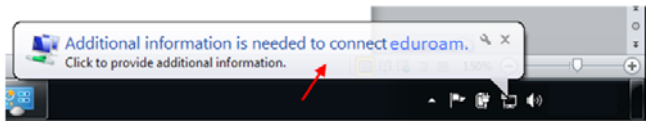


Ensure the selection box next to **Automatically use my windows logon name and password (and domain if any)** is **NOT** ticked then click on the **OK** button and return to **Protected EAP properties** window

Step 10.

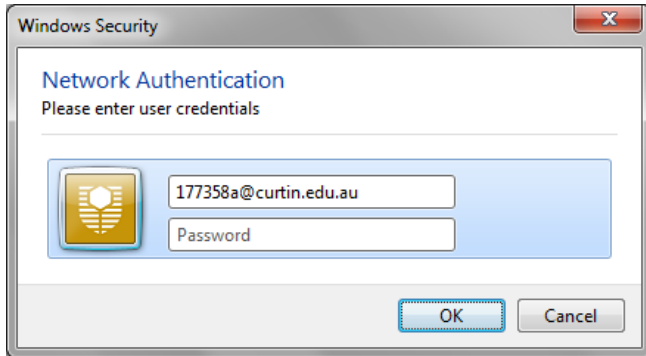
Click **OK** and return to **Manage wireless networks that use (Wireless Network Connection)** window

Step 11.



Click on the pop-up window that appears from the bottom tool bar.

Step 12.



Enter your Curtin user ID in the **User name:** textbox using the format [userid@curtin.edu.au](mailto:userid@curtin.edu.au)

Enter your OASIS password in the box marked **Password:**

Click the **OK** button.