

IMPORTANT INFORMATION FOR CURTIN WIRELESS ACCESS

- STUDENT / WINDOWS 7 -

Information required for connection to the Curtin Wireless network:

Wireless network names

There are two wireless networks operating at Curtin University. One is available for staff and the other for students. When you configure your network connection you must enter the appropriate name (or SSID) for the account you intend to use. These are listed:

Student: student-curtin
Post-grads: student-curtin
Staff: staff-curtin
Associate: staff-curtin

Wireless network credentials

You must login using the following credentials:

Students: OASIS username and password
Post-grads: OASIS username and password
Staff: OASIS username and password
Associate: OASIS username and password

Where to find more information:

Curtin Wireless website:

Visit <http://cits.curtin.edu.au/> for information, instructions and assistance. There is information on current and future locations, computer configuration, troubleshooting and frequently asked questions.

OASIS:

Students can check the status of their wireless credentials at the OASIS website. Log in, select "Account Management" from the menu on the left. The status of your account will be displayed in the "Network Connections" panel.

Information Security website:

Go to http://policies.curtin.edu.au/policies/az_index.cfm for information regarding University policies and current security threats such as worms and scams.

- The instructions were compiled by Network Services from the process of configuring a Intel® Pro/Wireless ABG Wireless LAN Adapter in a Toshiba Tecra M4 tablet notebook, running Windows 7 Enterprise. There may be some variations in the window dialogue and field entries in other revisions of the operating system so some interpretation of the general procedure may be required.
- Authentication takes place against your OASIS details – so please make sure you have activated your OASIS account.

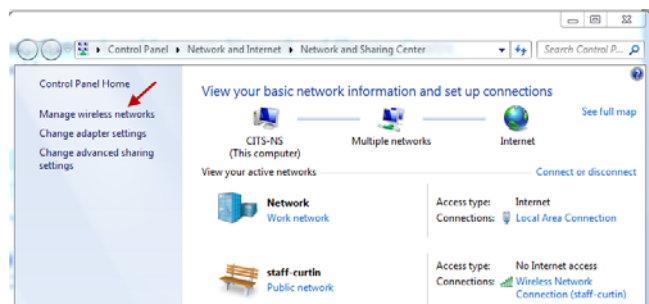
Follow the instructions as shown below:

Note: You may be able to use this setup guide for Windows Vista, though some screens may be different.

Step 1.

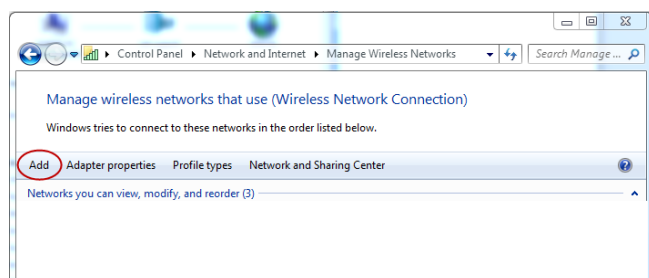
Click on Start > Control Panel > Network and Internet > Network and Sharing Center. The following window should appear.

Step 2.



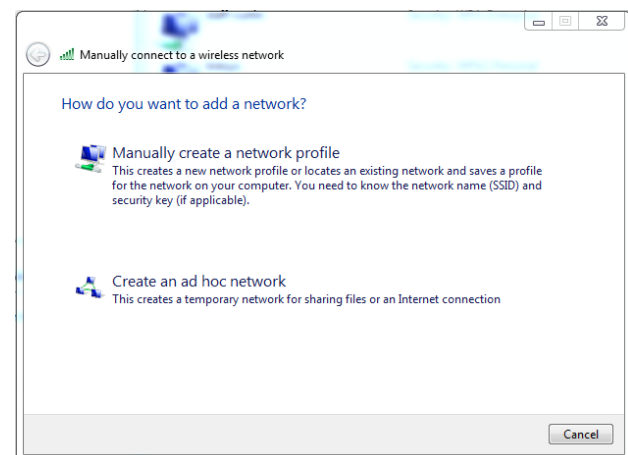
Click on **Manage wireless networks** link.

Step 3.



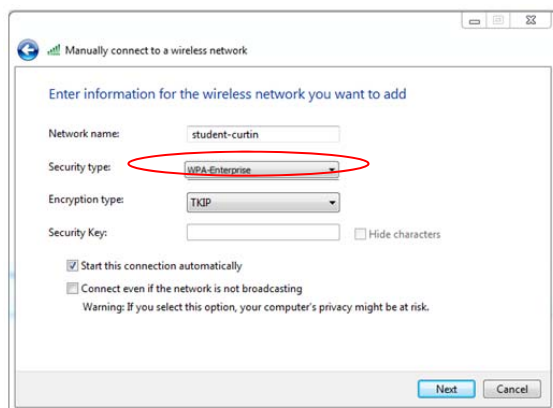
Click on the **Add** link and the window below will appear.

Step 4.



Select the option **Manually create a network profile**

Step 5.



Enter **student-curtin** in the box labelled **Network name**:

Click on the selection box labelled **Security type** and select **WPA-Enterprise**.

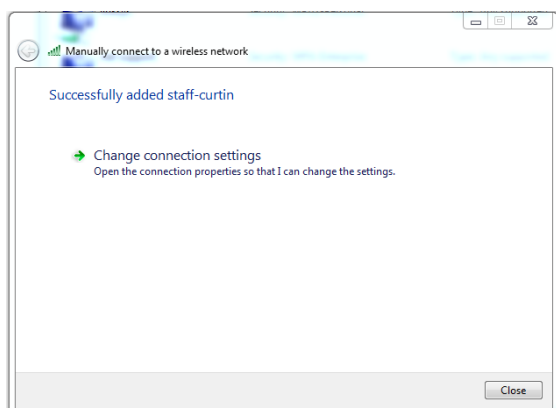
The Encryption type will automatically select TKIP. Do not change this.

Do not enter anything in the box titled **Security Key/Pass phrase** as this is not required.

Select the option **Start this connection automatically**.

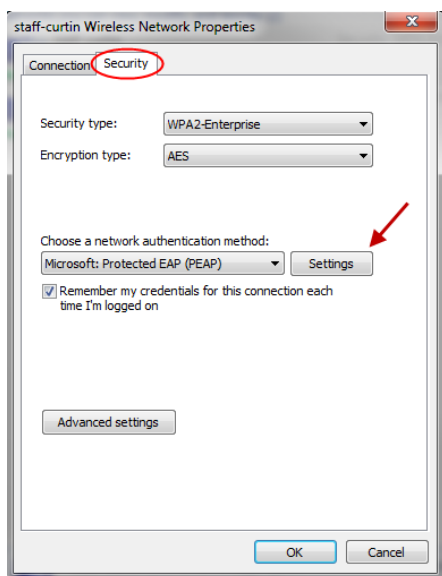
Now click **next**.

Step 6.



Select **Change connection settings**.

Step 7.



Click on the **Security** tab

Make sure **WPA2-Enterprise** is selected for **Security type**

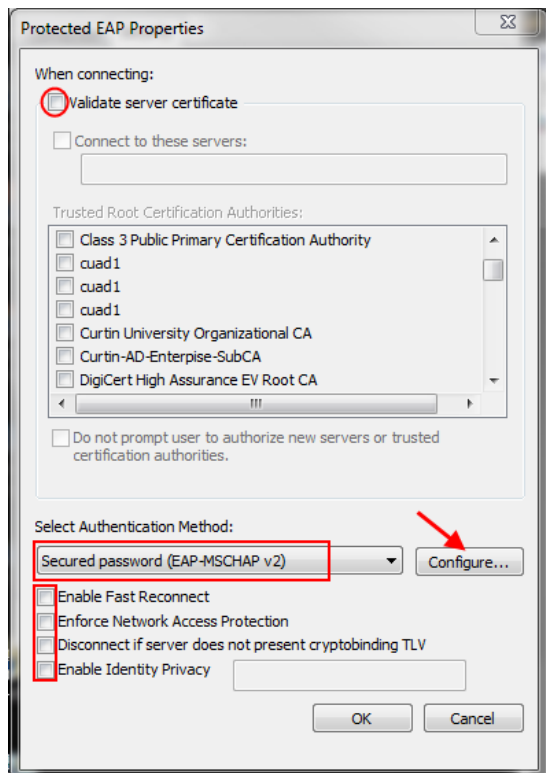
Make sure **AES** is selected for **Encryption type**

Make sure **Microsoft: Protected EAP (PEAP)** is selected as a network authentication method.

Tick the “Remember my credentials for this connection each time I’m logged on”

Click on the **Settings** button

Step 8.



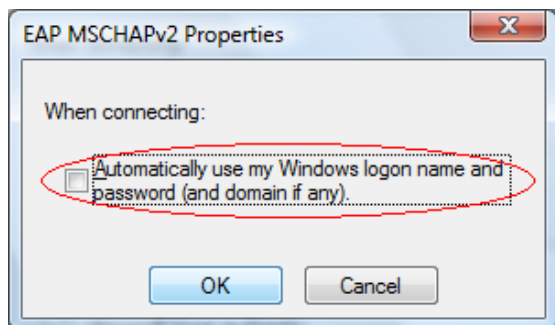
Un-Select **Validate server certificate**.

Click on the selection box under **Select Authentication Method:** and select **Secured password (EAP-MSCHAP v2)**.

Un-select **Enable Fast Reconnect** if it's ticked, as well as the next three

Click on the **Configure...** button

Step 9.

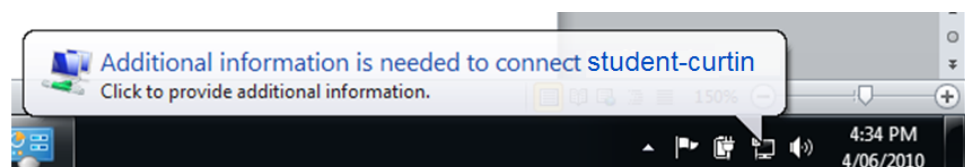


Ensure the selection box next to **Automatically use my windows logon name and password (and domain if any)** is **NOT** ticked then click on the **OK** button and return to **Protected EAP properties** window

Step 10.

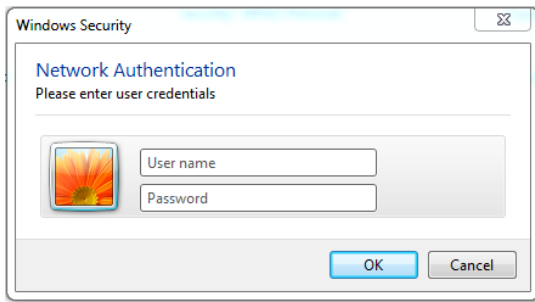
Click **OK** and return to **Manage wireless networks that use (Wireless Network Connection)** window

Step 11.



Click on the pop-up window that appears from the bottom tool bar.

Step 12.



Enter your user id in the box next to **User name:** followed by your password in the box next to **Password:** then click on **OK** button.