

IMPORTANT INFORMATION FOR CURTIN WIRELESS ACCESS

- STAFF / WINDOWS XP-

Information required for connection to the Curtin Wireless network:

Wireless network names

There are two wireless networks operating at Curtin University. One is available for staff and the other for students. When you configure your network connection you must enter the appropriate name (or SSID) for the account you intend to use. These are listed:

Student: student-curtin
Post-grads: student-curtin
Staff: staff-curtin
Associate: staff-curtin

Wireless network credentials

You must log in using the following credentials:

Students: OASIS username and password
Post-grads: OASIS username and password
Staff: OASIS username and password
Associate: OASIS username and password

Where to find more information:

Curtin Wireless website:

Visit <http://cits.curtin.edu.au/> for information, instructions and assistance. There is information on current and future locations, computer configuration, troubleshooting and frequently asked questions.

OASIS:

Students can check the status of their wireless credentials at the OASIS website. Log in, select "Account Management" from the menu on the left. The status of your account will be displayed in the "Network Connections" panel.

Information Security website:

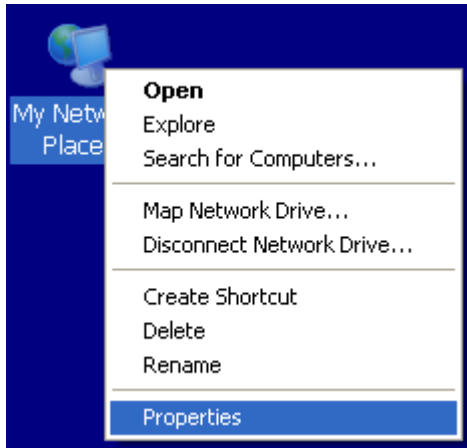
Go to http://policies.curtin.edu.au/policies/az_index.cfm for information regarding University policies and current security threats such as worms and scams.

- The instructions were compiled by Network Services from the process of configuring a Cisco Aironet 350 Wireless LAN Adapter in a Compaq N800c notebook, running Windows XP-SP2. There may be some variations in the window dialogue and field entries in other revisions of the operating system so some interpretation of the general procedure may be required.
- Authentication takes place against your OASIS details – so please make sure you have activated your OASIS account.

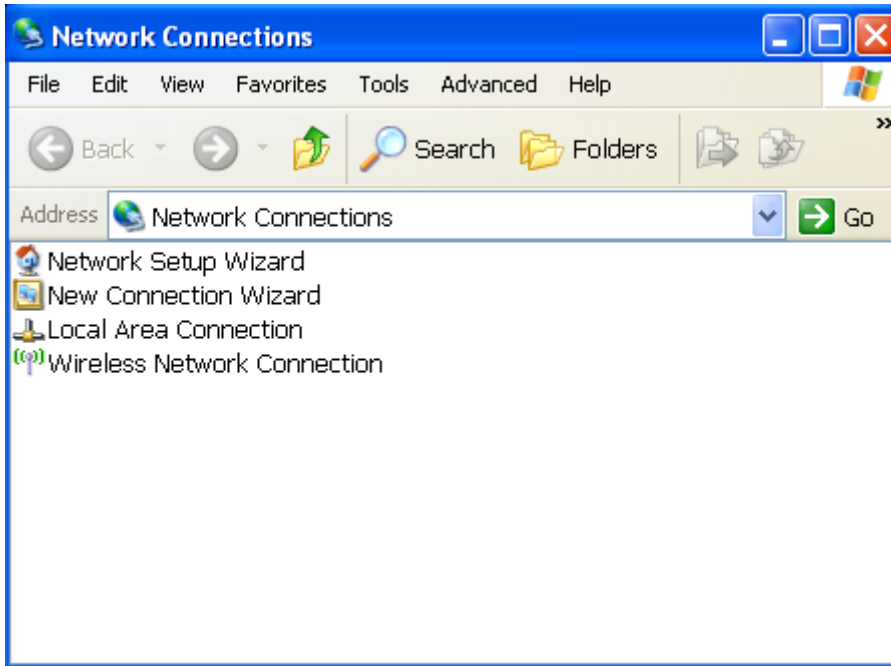
Configuring Windows XP for Wireless Connectivity

Follow the instructions as shown below:

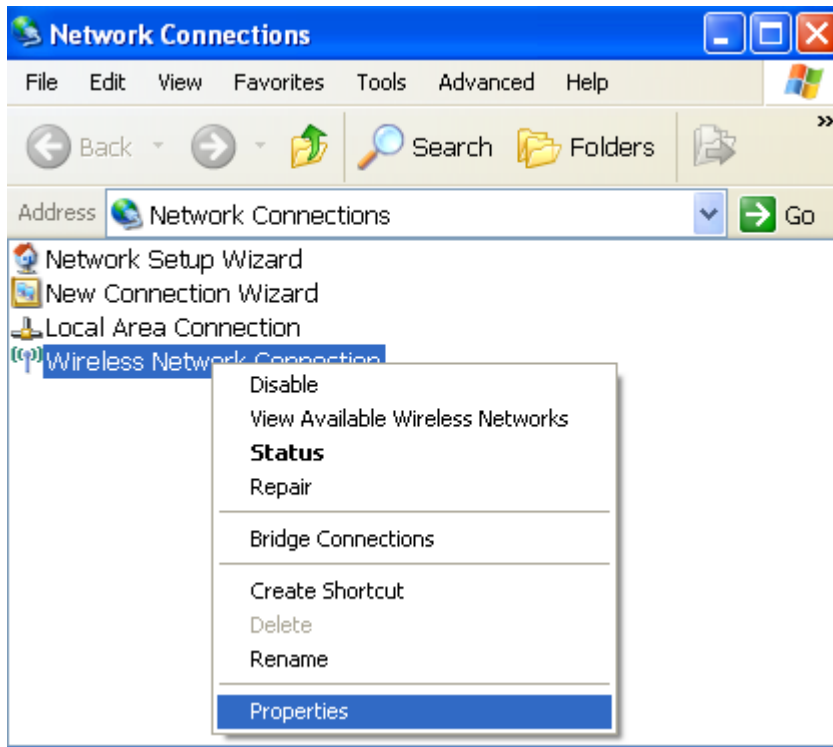
Step 1.



Right Click on **My Network Places** and select **Properties** and following window should appear.

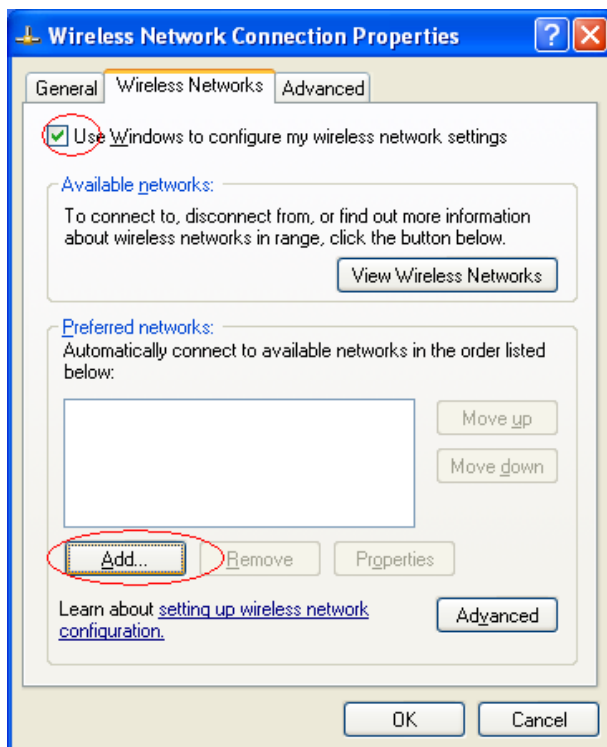


Step 2.



Right Click on **Wireless Network Connections** and select **Properties**.

Step 3.

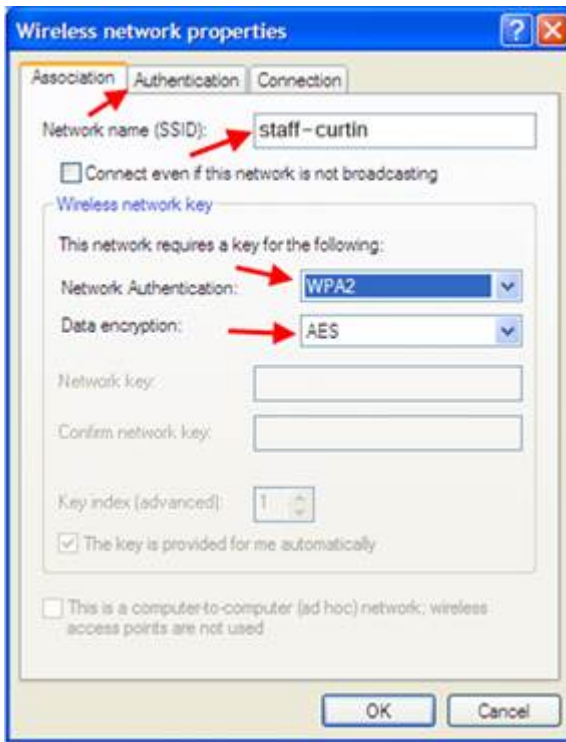


In the **Wireless Network Connection Properties** window go to the **Wireless Networks** Tab

Tick **Use Windows to configure my wireless network settings**

In **Preferred networks** section click **Add**

Step 4.

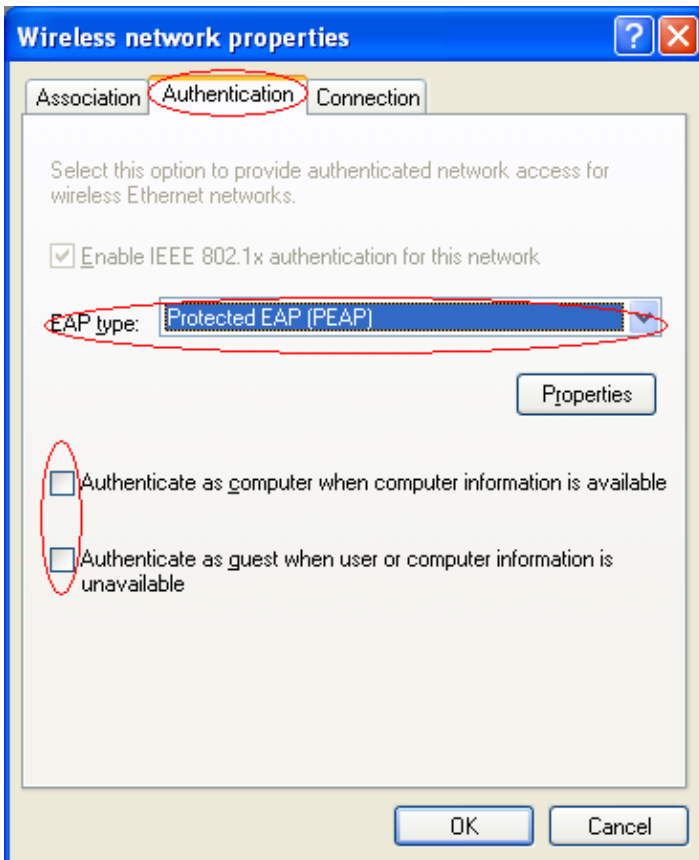


In the **Association** tab of the **Wireless network properties** window, type **staff-curtin** in the **Network name (SSID)** field

Under **Wireless network key** check the following settings:

Network Authentication = WPA
Data encryption = AES

Step 5.



Go to the **Authentication** tab

Check the following settings:

Enable IEEE 802.1x authentication for this network is ticked

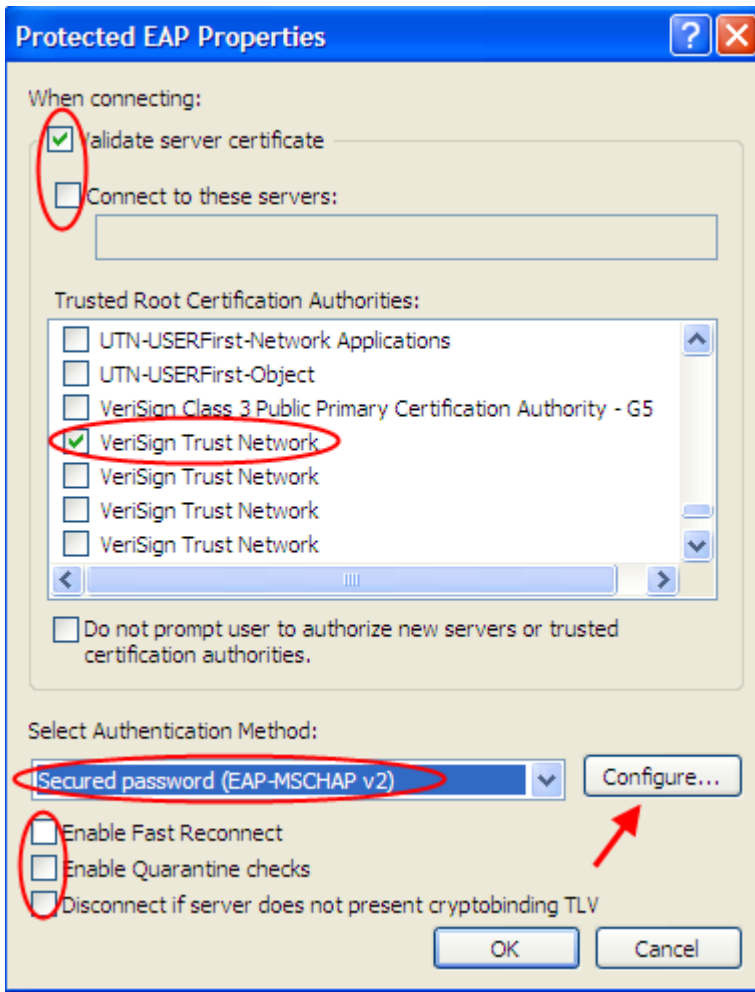
EAP type = Protected EAP (PEAP)

Authenticate as computer... is NOT ticked

Authenticate as guest... is NOT ticked

Click the **Properties** button

Step 6.



In the **Protected EAP Properties** window, check the following settings:

Validate server certificate is ticked

Connect to these servers is NOT ticked

Scroll through **Trusted Root Certificate Authorities** and tick **VeriSign Trust Network**

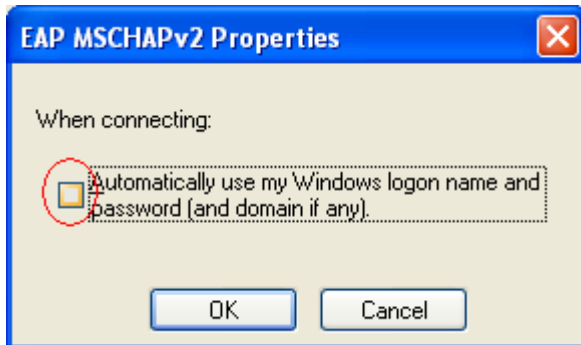
Do not prompt user to authorize new servers or trusted certification authorities. is NOT ticked

Select Authentication Method: is set to **Secured password (EAP-MSCHAP v2)**

Un-tick **Enable Fast Reconnect** if it's ticked, as well as the next two

Click the **Configure** button

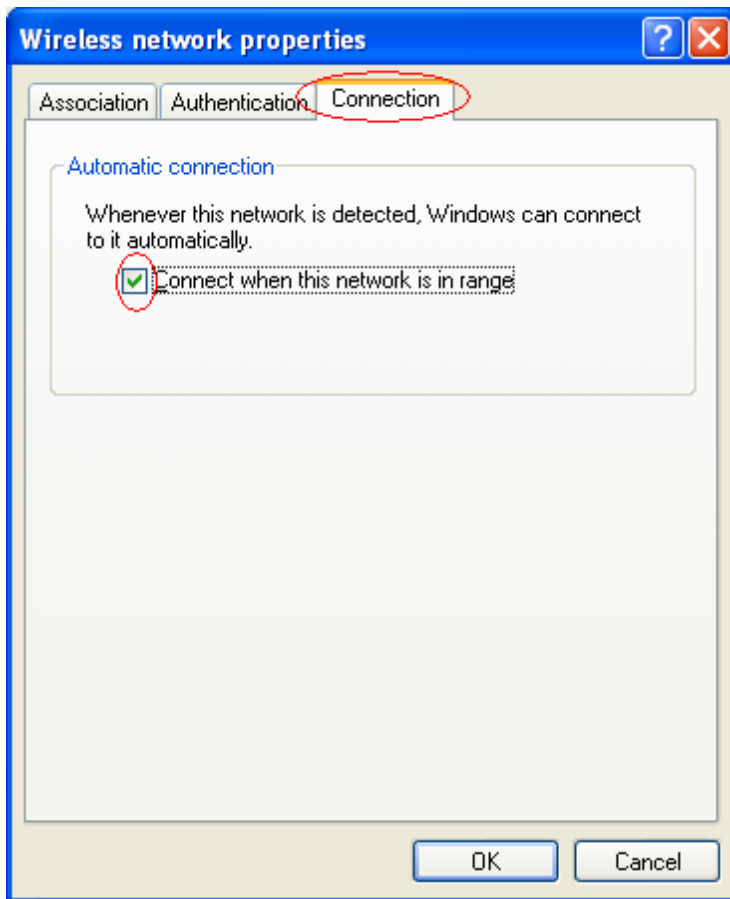
Step 7.



Ensure the selection box next to **Automatically use my windows logon name and password (and domain if any)** is NOT ticked then click on the **OK** button and return to **Protected EAP properties** window

Click **OK** to return to the **Wireless network properties** window

Step 8.

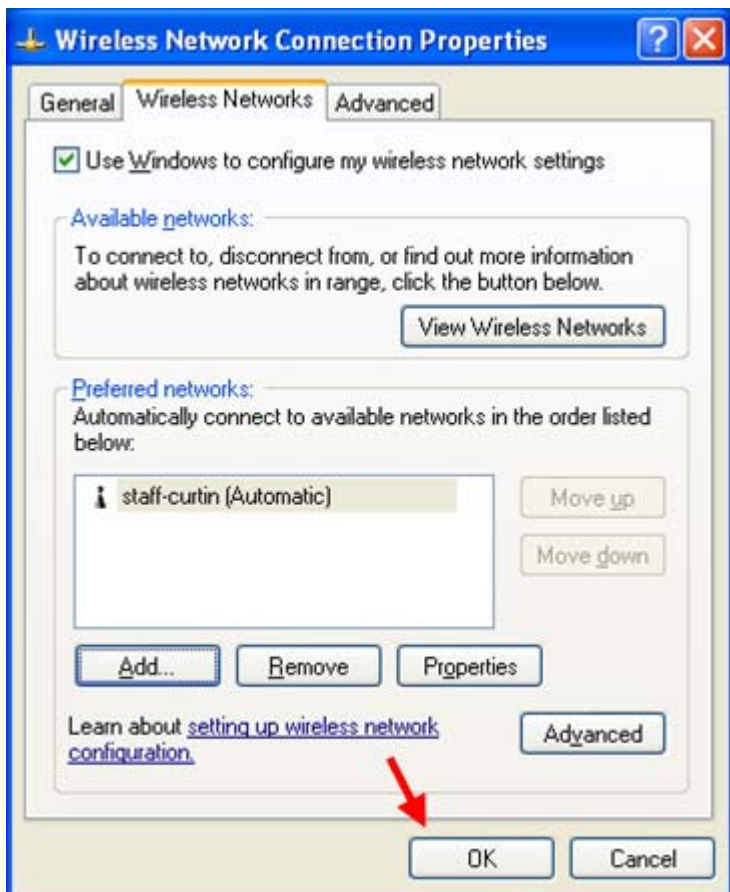


In the **Wireless network properties** window, go to the **Connection** tab

Under **Automatic connection** ensure **Connect when this network is in range** is ticked.

Click **OK** to return to the **Wireless Network Connection Properties** window

Step 9.



Click **OK** to finish the configuration.

Step 10.



After a short period a small dialogue box entitled **Wireless Network Connection** will appear in the lower right side of the screen, above the toolbar clock. It should say **Click here to select a certificate or other credentials for connection to the network staff-curtin**

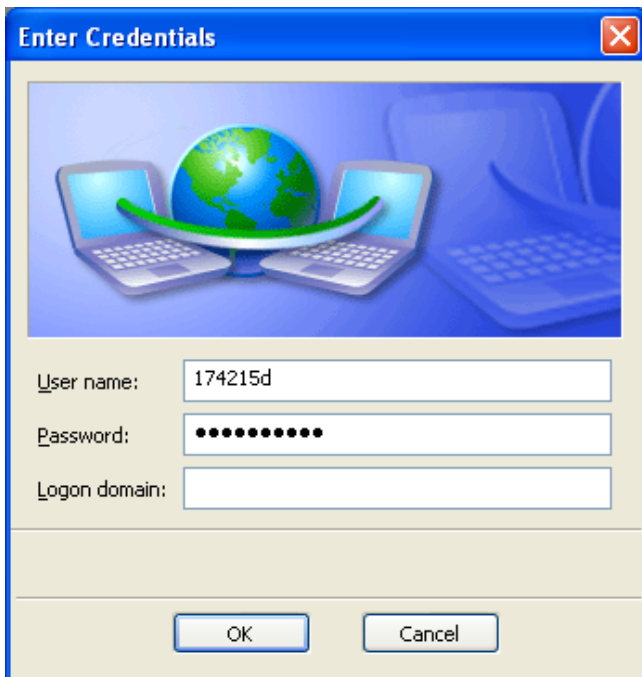
Left **Click** once on this pop-up

Step 11.



An **Enter Credentials** window appears

Step 12.



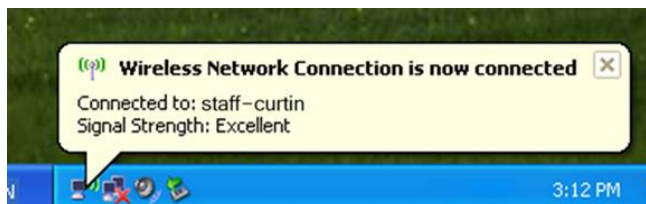
In the **Enter Credentials** window.

Enter your primary Curtin username and password:

Username: **Staff ID**
Password: **password**
Logon domain: *Leave blank*

Click **OK**

Step 13.



Another dialogue box entitled **Wireless Network Connection is now connected** will appear in the lower right of the screen. It should say:

Connected to: staff-curtin
Signal Strength: Excellent/Low

Your computer is now connected to the staff-curtin network.