

Eduroam Setup Guide

For Microsoft Windows Vista



Network roaming for higher education and research

This guide is intended for researchers, staff and students from participating institutions to securely access the Internet from Curtin.

The steps involved in setting up Eduroam connection in Curtin are:

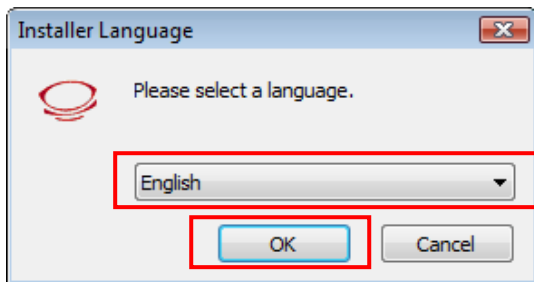
1. Install SecureW2 client
2. Setup Eduroam wireless network
3. Connect to Eduroam



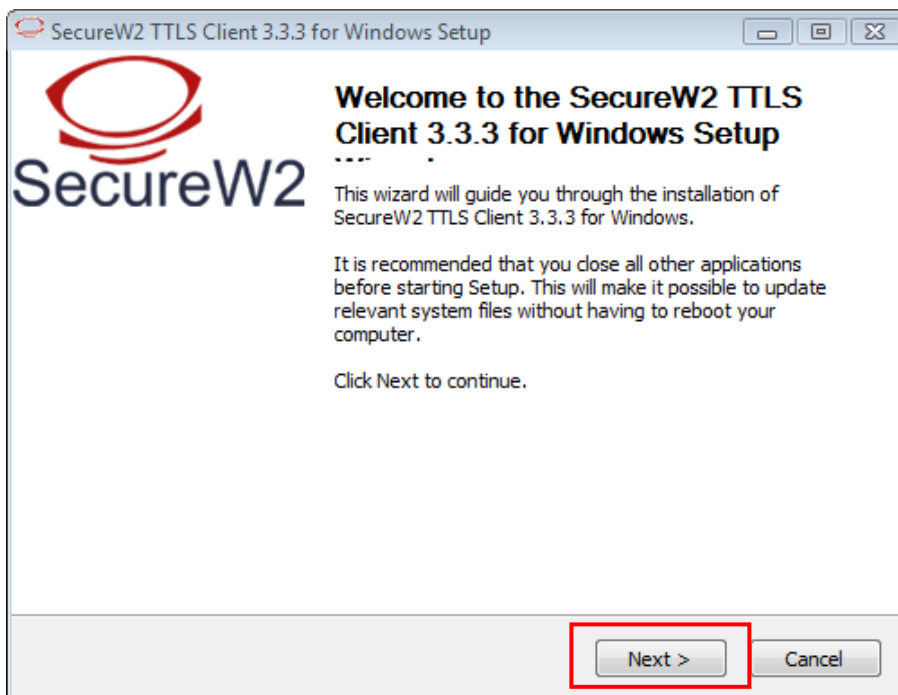
Note: Curtin staff and students should not use the Eduroam wireless network while located at any of the University campuses where connection to curtin.edu.au network is available.

Step 1 – Install Secure W2 Client

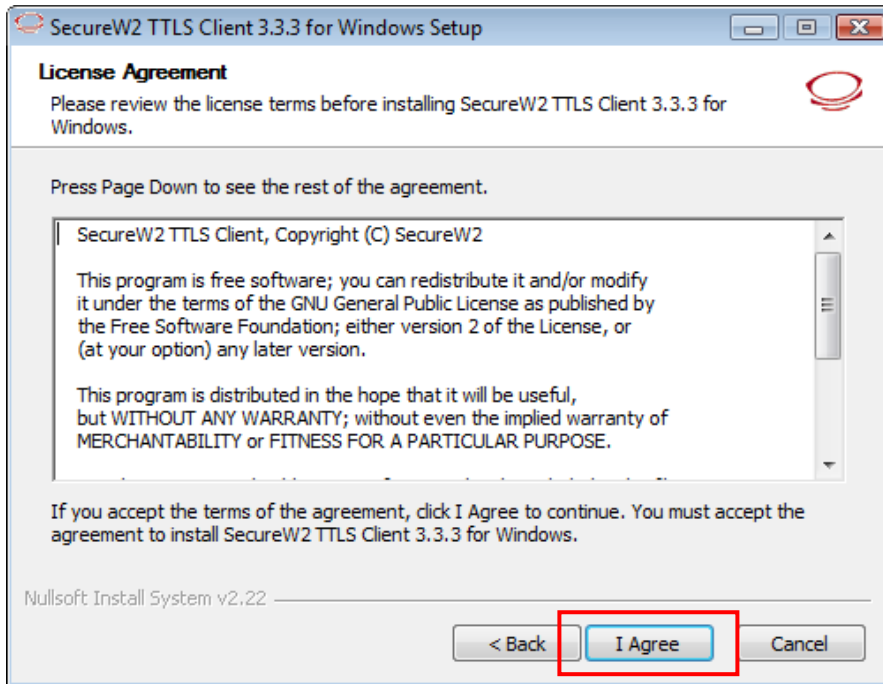
1. [Download Secure W2 client](#) for Windows XP/Vista to your computer.
2. Extract the content of the file to a temporary folder.
3. Run the installer program and follow the instructions on screen as follows:
 - a. Select language option and click **OK** button.



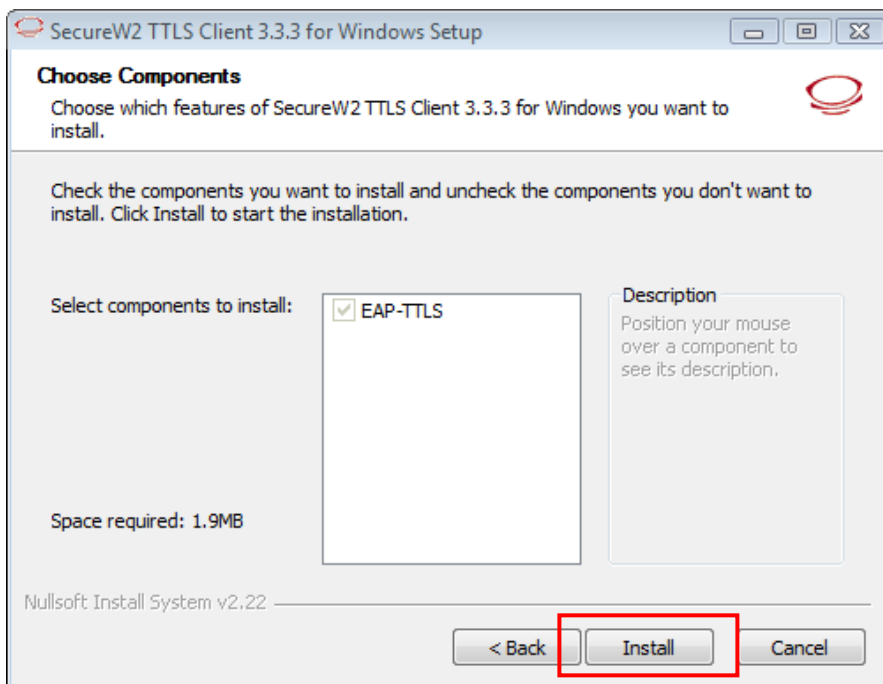
- b. Click **Next** button.



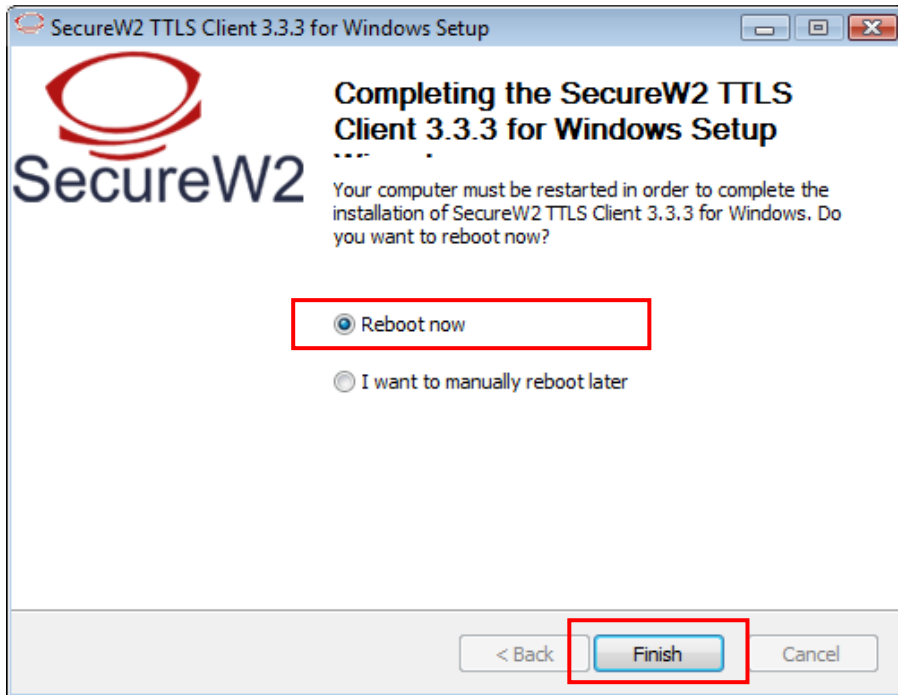
c. Click **I Agree** button.



d. Click **Install** button.

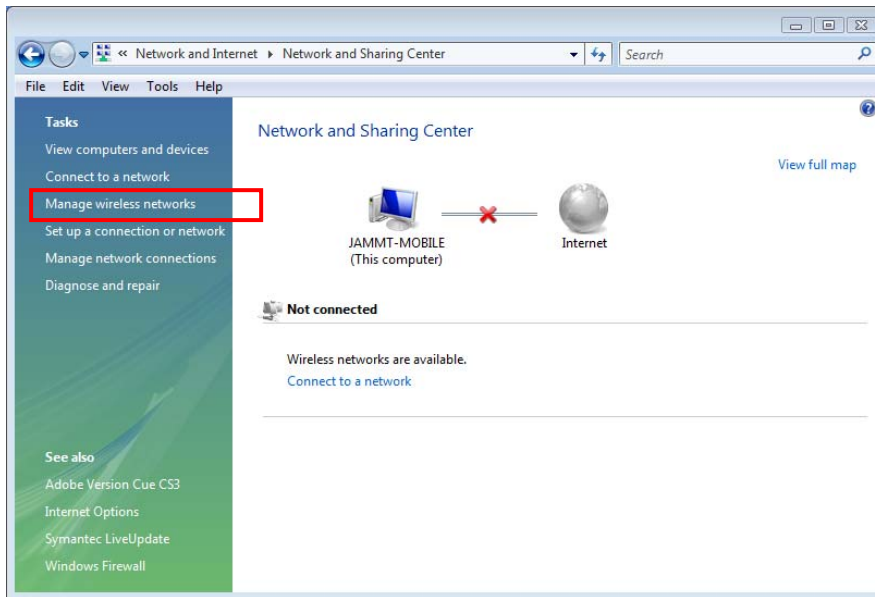


- e. Select option to reboot computer now. Click **Finish** button.

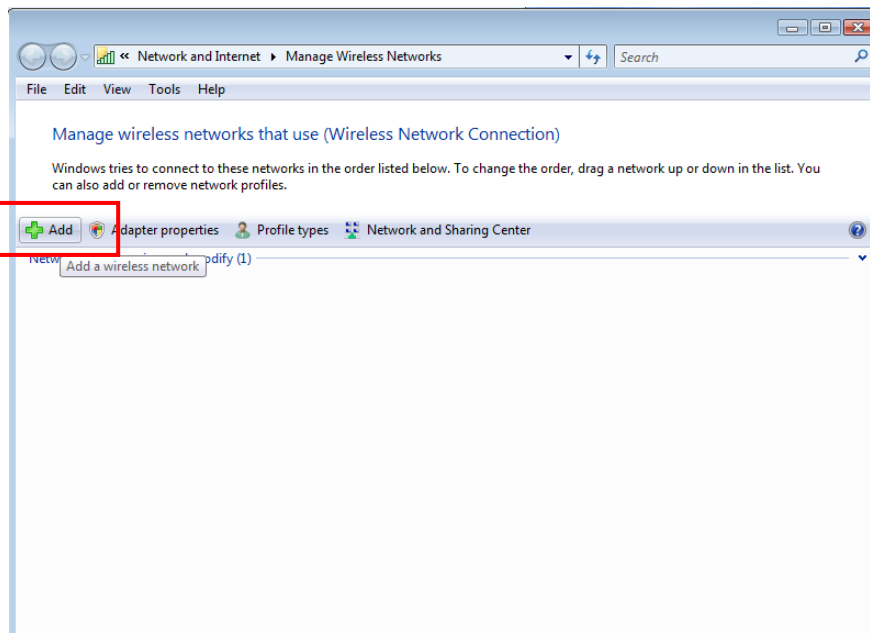


Step 2 – Setup Eduroam Wireless Network

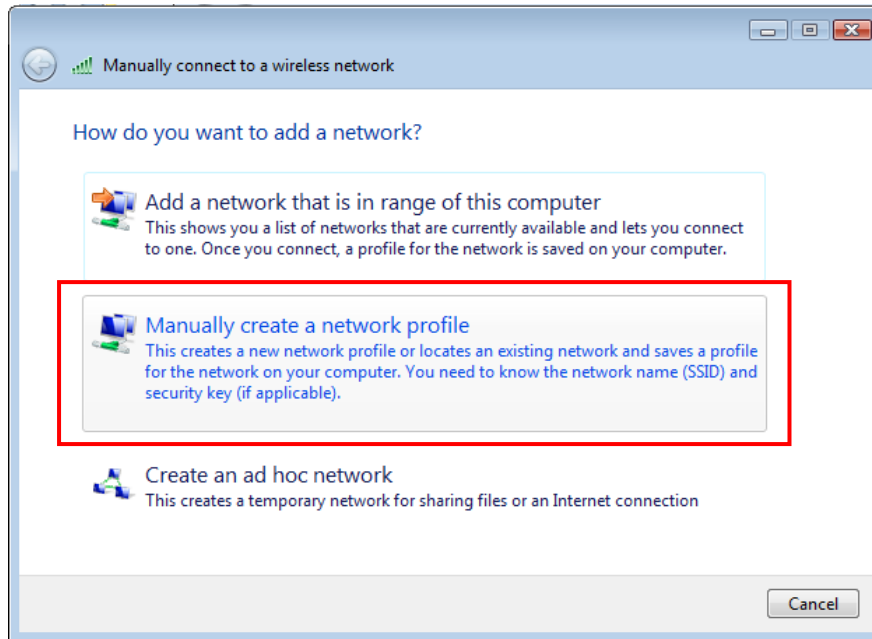
1. Open up your Manage Wireless Networks by clicking **Start** → **Control Panel** → **Network and Internet**. Select **Manage Wireless Networks**.



2. Click **Add** button.



3. Double click the option to **Manually create a network profile**.



4. Enter the network details as follows:

Network name = **eduroam** (**Note: the network name is case sensitive**)

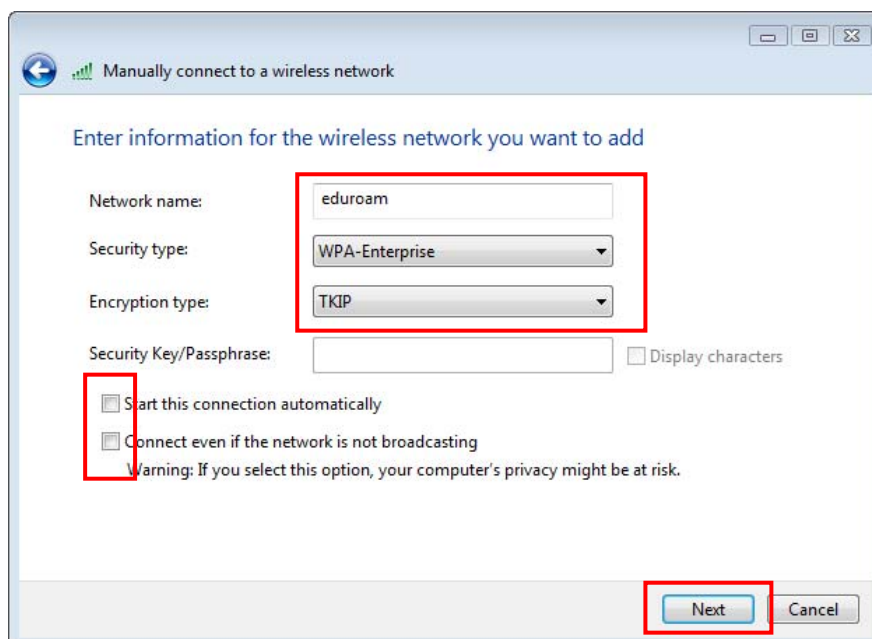
Security type = **WPA-Enterprise**

Encryption type = **TKIP**

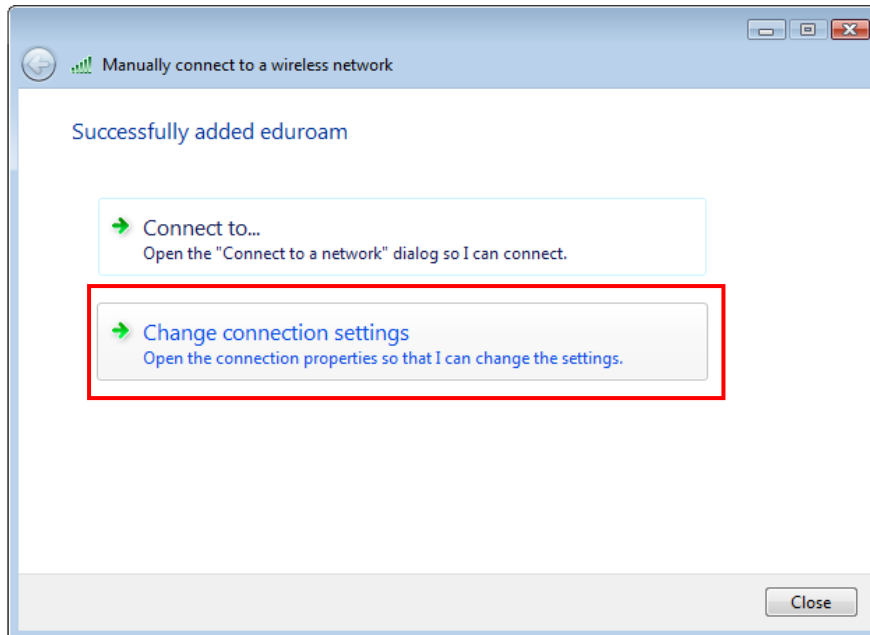
Uncheck the option to start connection automatically

Uncheck the option to connect even if network is not broadcasting

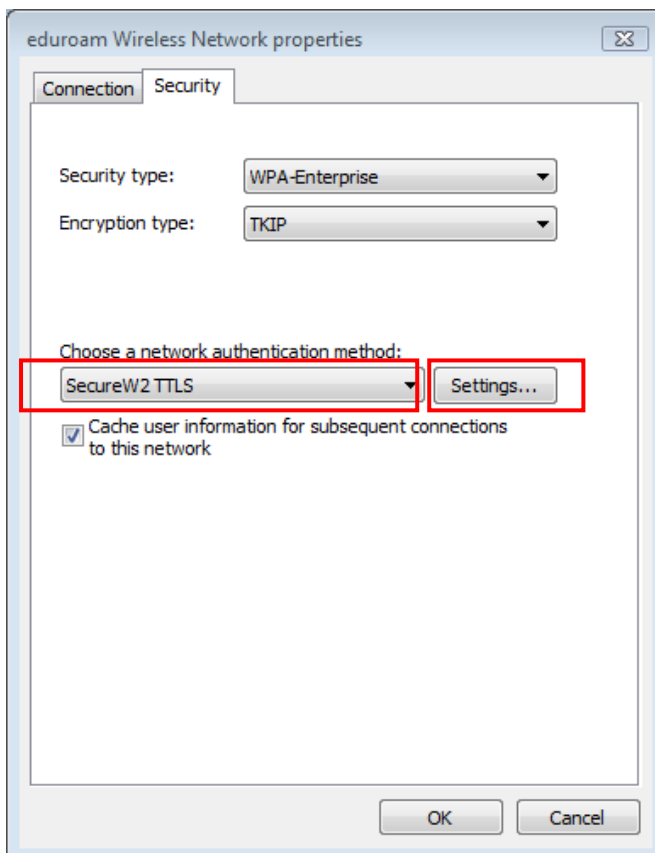
Click **Next** button.



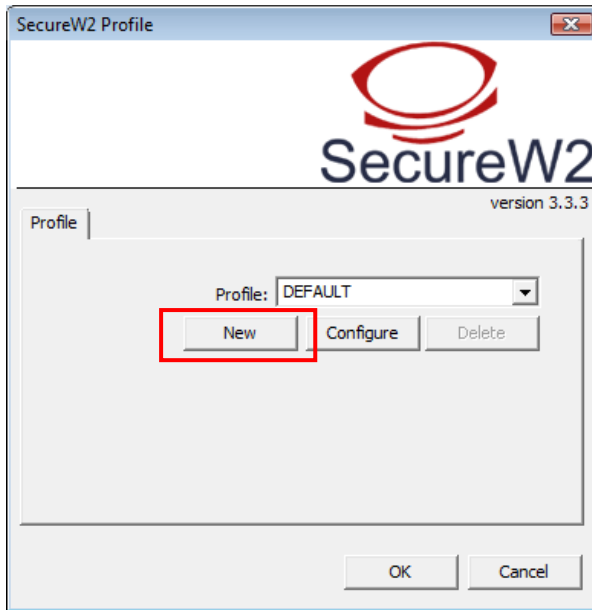
5. Double click the option to **Change connection settings**.



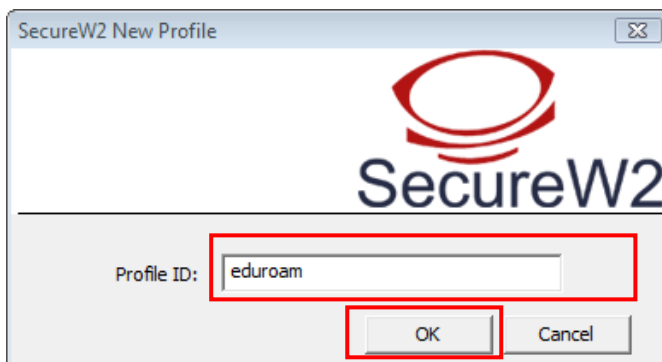
6. Select network authentication method then click **Settings** button:
Network authentication method = **SecureW2 TTLS**



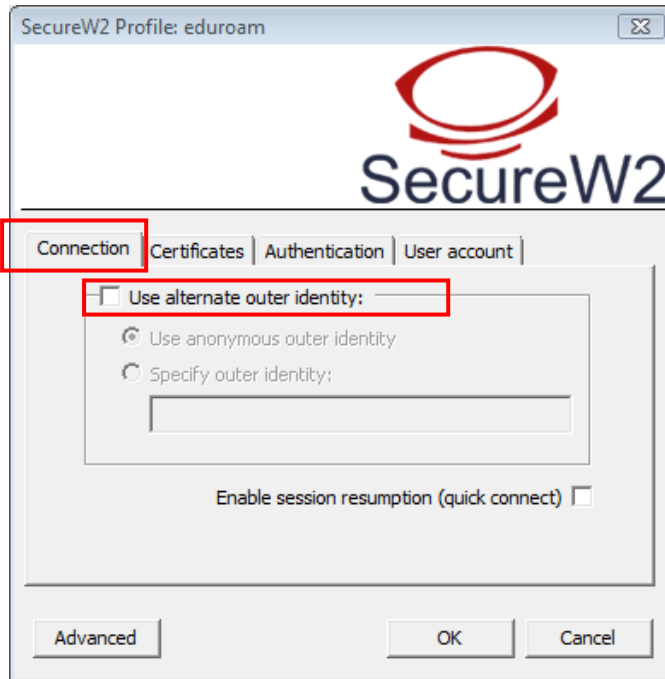
7. Click **New** button.



8. Enter profile ID as **eduroam** then click **OK** button.



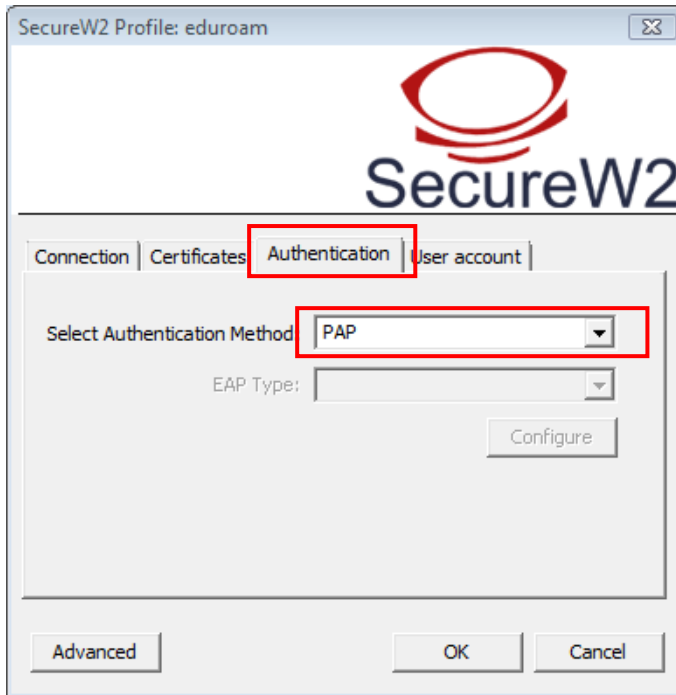
- On the Connection tab, uncheck the option to Use alternate outer identity.



- On the Certificates tab, uncheck the option to verify server certificate.



11. On the Authentication tab, select **PAP** as authentication method.



12. On the User account tab, enter your login details for your institution:

Username = <username at your home institution, e.g. 12345@someuni.edu.au>

Password = < password from your institution>

Click **OK** button.

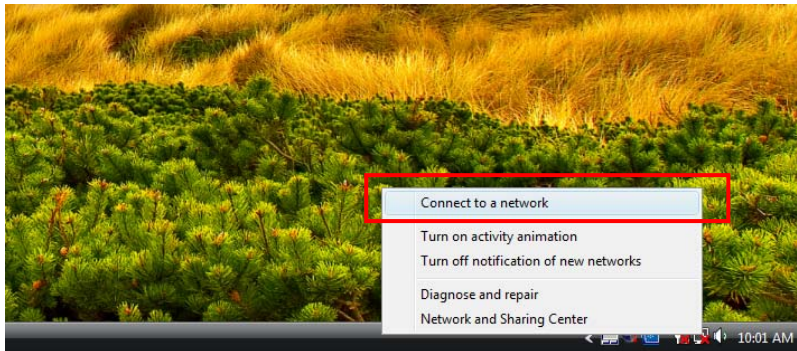


13. Once the Eduroam profile has been configured, click **OK** button to complete the setup.

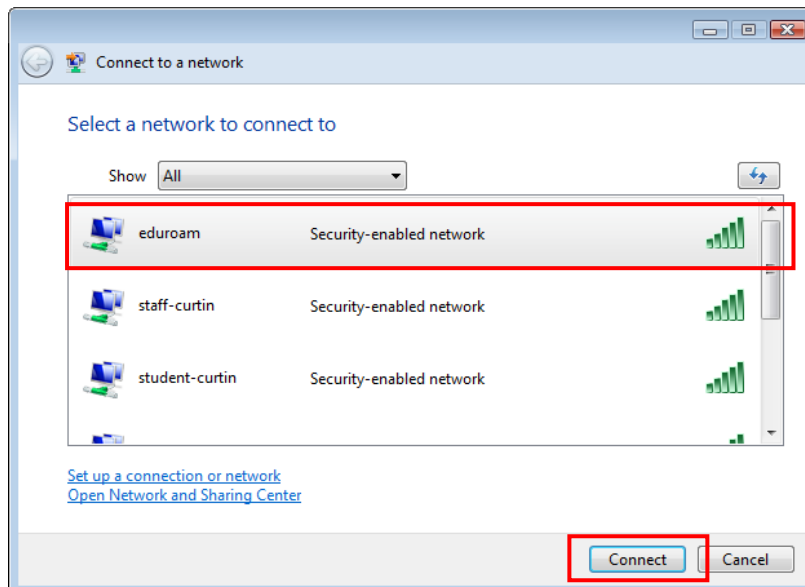


Step 3 – Connect to Eduroam

1. On the bottom right hand corner of your windows taskbar, right click on the **Wireless icon** and select **Connect to a network**.



2. Select **eduroam** wireless network and click **Connect** button.



If you require any help with Eduroam setup or encounter problem connecting to Eduroam network, please contact your institution's IT support.