

Eduroam Setup Guide

For Mac OSX 10.5 (Leopard)



Network roaming for higher education and research

This guide is intended for researchers, staff and students from participating institutions to securely access the Internet from Curtin.

The steps involved in setting up Eduroam connection in Curtin are:

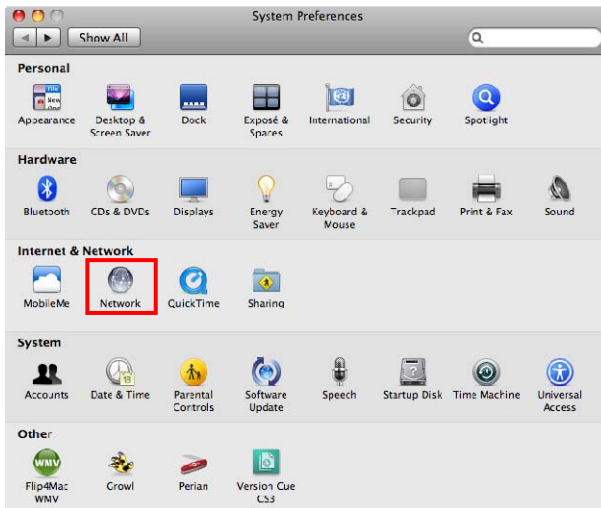
1. Setup Eduroam wireless network
2. Connect to Eduroam



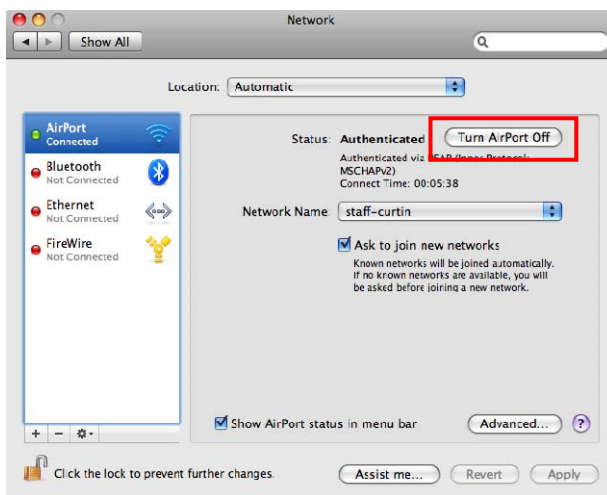
Note: Curtin staff and students should not use the Eduroam wireless network while located at any of the University campuses where connection to curtin.edu.au network is available.

Step 1 – Setup Eduroam Wireless Network

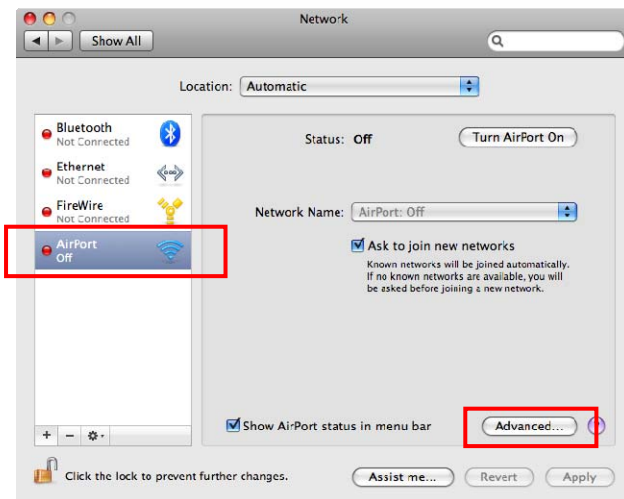
1. From the Apple menu, select **System Preferences**.
2. Select the **Network** icon.



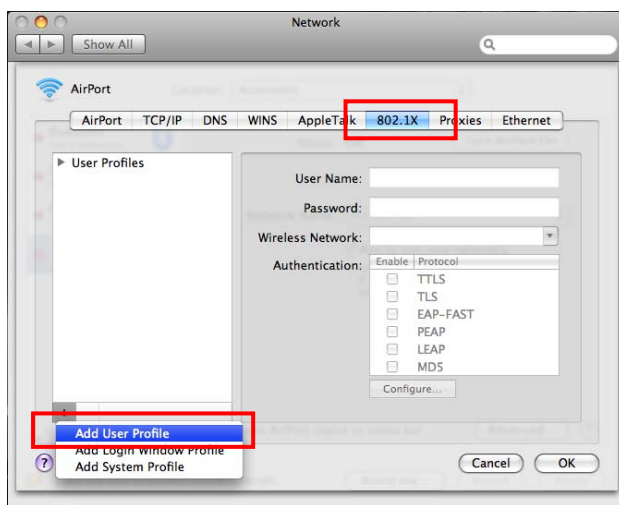
3. Turn off Airport if it is currently on.



4. Select the **Airport** item and click the **Advanced** button.

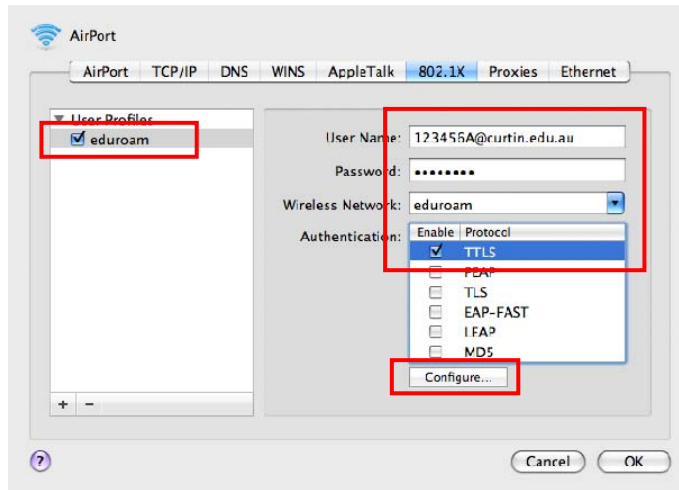


5. Click on the **802.1x** tab. Click the (+) button in the lower-left hand corner and select **Add User Profile**.

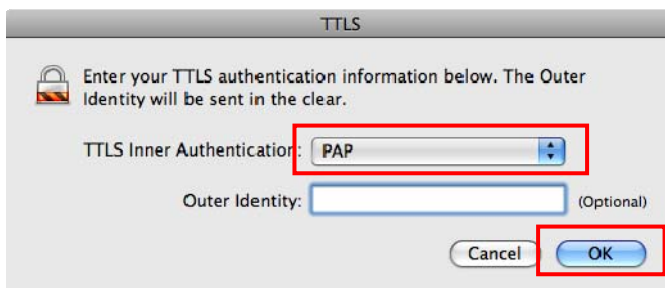


- Setup your user profile and enter your login details for your institution:
 Username = <username at your home institution, e.g. 12345@someuni.edu.au>
 Password = < password from your institution>
 Wireless Network = **eduroam** (**Note: the network name is case sensitive**)
 Authentication = **TTLS**

Click **Configure** button.

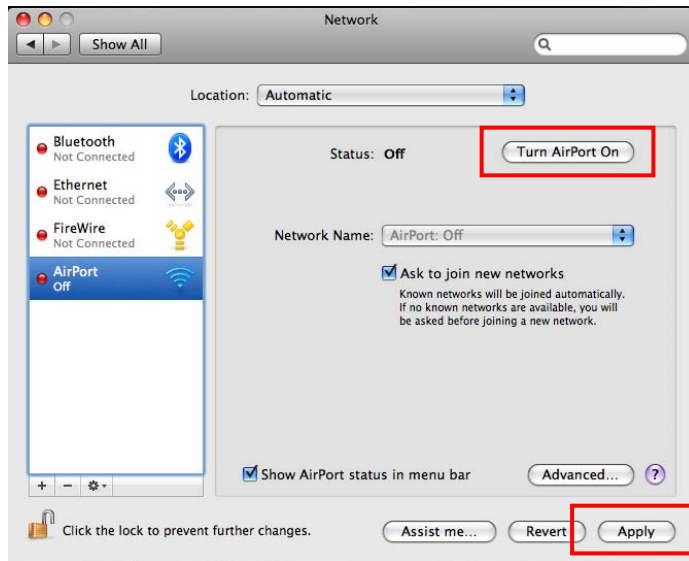


- Select **PAP** as the TTLS Inner Authentication. Leave Outer Identity blank. Click **OK** button.

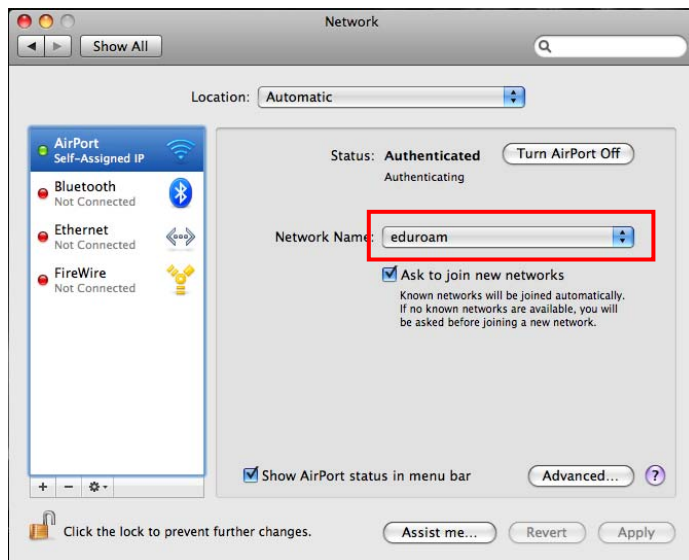


Step 2 – Connect to Eduroam

1. Click **Apply** then click **Turn Airport On** button.



2. Select **eduroam** from the Network Name drop down box.



If you require any help with Eduroam setup or encounter problem connecting to Eduroam network, please contact your institution's IT support.